

# ***EXERGEN®***

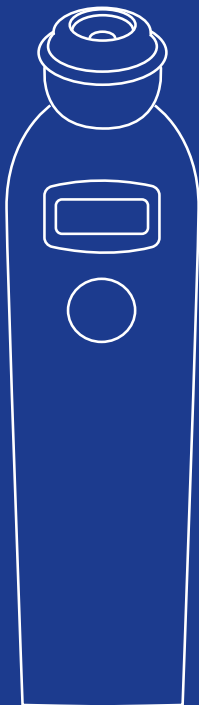
**Temporal Artery**

## **Thermometer**

TemporalScanner® TAT-2000C+  
Home Model

---

**Instructions For Use**



# ***EXERGEN®***

TemporalScanner® TAT-2000C+



Scan here for instructions.



1-617-923-9900



MEDICAL@EXERGEN.COM



WWW.EXERGEN.COM



EXERGEN CORPORATION  
400 PLEASANT STREET  
WATERTOWN, MA 02472, USA

## IMPORTANT SAFETY INSTRUCTIONS

### READ ALL INSTRUCTIONS BEFORE USING

---

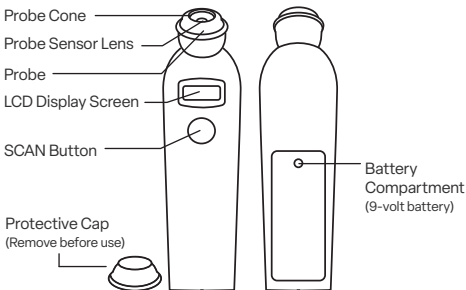
When using the product, basic safety precautions should always be followed, including the following:

- This product is intended for household use only. For information on thermometers for professional use, please see [www.exergen.com](http://www.exergen.com), or call 617-923-9900.
- Use this product only for its intended use as described in this manual.
- Use of this product is not intended as a substitute for consultation with your physician.
- Do not take temperature over scar tissue, open wounds or abrasions.
- Basic safety precautions should always be observed, especially when this product is used by, on or near children.
- The operating environmental temperature range for this product is 60 to 104°F (15.5 to 40°C).
- Always store this thermometer in a clean, dry place where it will not become excessively cold (-4°F/-20°C), or hot (122°F/50°C).
- The thermometer is not shockproof. This thermometer is not intended to be sterile. Follow the cleaning instructions as described in this manual.
- Do not use this thermometer if it is not working properly, if it has been exposed to temperature extremes, damaged, been subject to electrical shocks or immersed in water. For service, examination, repair, or adjustments, return your thermometer to Exergen Corporation.
- Do not operate where aerosol spray products are being used or where oxygen is being administered.
- If your thermometer will not be used regularly, remove the battery to prevent possible damage due to chemical leakage. If the battery leaks, remove carefully. Do not allow bare skin to touch leaking fluid.
- Dispose of used batteries per local regulations.

**SAVE THESE INSTRUCTIONS**

## Familiarize Yourself With the Instrument

---



## Features

---

### Soft Glow Display

Soft lighting for reading in low light.

### Eight Temperature Memory

Automatically retains the last 8 temperature readings for instant recall to check on fever progression.

### Programmable Beeper

Beeeping sound can be turned off or on to avoid disturbing a sleeping child (or adult). The flashing LED facing the forehead while scanning turns off when beeper is turned off.

### Programmable °F or °C

Select most convenient temperature scale.

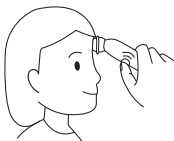
One-button programming and memory access.

## Using The Scanner

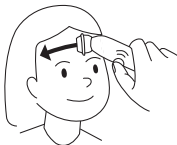
---



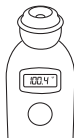
- 1**  
Remove protective cap.



- 2**  
Place probe so it is touching the center of the forehead, press and hold the button.



- 3**  
Continue to hold the button while sliding the thermometer in a straight line to the hairline as it beeps. Avoid touching eye glasses or hair.



- 4**  
Release the button and read the temperature.

## Tips For Use

---

### Beeping and LED flashing

Beep and LED flashing indicate a rise to a higher temperature. Slow beeping indicates that the instrument is still scanning, but not finding any higher temperatures.

### Display Reading

The reading will remain on the display for 30 seconds after the button is released.

### To Restart

Press the button to restart. The thermometer will immediately begin a new scan each time the button is pressed and held down.

### Environmental effects

- Let the thermometer adjust to room temperature for 30 minutes.
- Do not hold the thermometer by its head to avoid inaccurate readings.

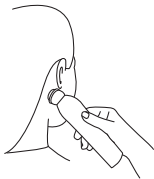
### When Not In Use

Thermometer will shut off automatically after 30 seconds.

To turn off immediately press and release the button quickly. Always replace the protective cap to protect the sensor when not in use.

### Perspiration on the forehead

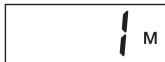
Press and hold the button while placing the probe on the neck just behind the ear lobe as shown in the image below. Release the button and read the temperature.



## Eight Temperature Memory Mode

---

In memory mode, a small M will appear on the display with memory location (1, 2, 3, 4, 5, 6, 7, 8). The most recent temperature reading is stored in location 1 and the earliest temperature is stored in location 8. During initial use after purchase, readings stored in the memory from factory tests can be disregarded.



### 1

To enter memory mode, start from a blank display, and tap the button quickly (if button is held down, the thermometer will go into scanning mode). 1 M will appear and alternate with the temperature stored in that memory location.



### 2

To access previously stored readings, tap the button quickly again. 2 M will alternate with the temperature in that memory location. Repeat through 8 M to access all recent memory readings.

**NOTE:** To exit memory mode and take a temperature, press and hold the button for 1-2 seconds until the display turns off.

## Turning the Audible Beeper OFF or ON

---

The factory setting is with the beeper and LED's ON.

If the beeper is on and you are concerned that the sound or flashing LED may disturb a sleeping child (or adult), the beeper and front LED can be turned off as follows:



### 1

Starting with a blank display, tap the button until the display flashes loud, (tap 10 times, past the 8 memory locations and the F-C display).



### 2

Press and hold the button until Shh is displayed, indicating the quiet mode. A beep will indicate that the setting has been changed, and the *TemporalScanner* will automatically shut off.

**NOTE:** To turn the beeper and front LED back on, repeat step 1 to find Shh then step 2 to change into loud.

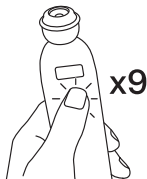


## Selecting °F or °C Mode

---

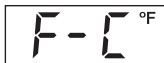
The factory setting is °F.

If you wish to change it to °C follow the steps below:



**1**

Starting from a blank display, tap the button until the flashing F-C appears after the 8 memory locations (9 taps). The current temperature mode will appear in the upper right indicated by the small °F or °C. The factory setting is °F.



**2**

To change from the °F to °C mode, press and hold the button until the small °F in the upper right of the display changes to °C. A beep will indicate that the setting has been changed, and the TemporalScanner will automatically shut off.

**NOTE:** To change from °C to the °F mode, repeat step 2, and press and hold the button until the small °C in the upper right of the display changes to °F.

## Display Messages

---

The display shows the letters "Scn" in a large, black, seven-segment digital font.

A flickering Scn on display is visible during measurement. At completion, releasing the button will display and lock temperature on the screen for 30 seconds.

The display shows the letters "HI" in a large, black, seven-segment digital font.

Temperature measured is higher than 107.6 °F (42 °C).

The display shows the letters "LO" in a large, black, seven-segment digital font.

Temperature measured is lower than 60 °F (15.5 °C).

The display shows the text "HI.A" in a large, black, seven-segment digital font.

Temperature of the thermometer is higher than 104°F (40°C). Let the instrument acclimatize for about 30 minutes in a cooler area in which it will be used.

The display shows the text "LO.A" in a large, black, seven-segment digital font.

Temperature of the thermometer is lower than 60°F (15.5°C). Let the instrument acclimatize for about 30 minutes in a warmer area in which it will be used.

The display shows the text "Err" in a large, black, seven-segment digital font.

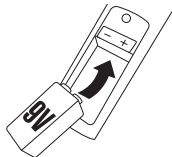
EMI/RFI (like static on a radio) protection is preventing a temperature from being taken. Wait a minute and try again. If not, reset by removing and replacing the battery. Be sure battery is tightly connected. Call Customer Service if error message reappears.

## Replacing the Battery



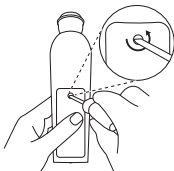
**Blinking battery icon with temperature displayed:** battery is low but will still operate correctly. Replace soon.

**Blinking battery icon with 2 dashes:** not enough energy in the battery to measure correct temperature. Replace battery.



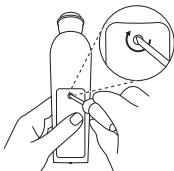
**2**

Insert an alkaline 9-volt battery as illustrated. The positive (small terminal) should always be on the right.



**1**

Insert small flathead screwdriver into the locking screw slot on the back of TemporalScanner and rotate counterclockwise until the slot is pointing at the unlock symbol. Fully remove battery compartment door.



**3**

Replace the battery compartment door by seating the bottom tab of the door in the compartment opening. Firmly hold the door, insert screwdriver in screw slot and rotate screw clockwise until the slot is pointing at the lock symbol.

## Cleaning

---

**The probe sensor lens and cone should be clean, always check before scanning.**

**1**



Dampen a cotton swab with either an alcohol prep/swab, or dip the cotton swab in a little alcohol, but do not use the alcohol prep/swab to clean the lens as it will not provide the leverage needed.

**2**



Twirl the cotton swab directly on the little lens deep in the center of the probehead.

**IMPORTANT:** Allow the thermometer to return to room temperature for 5 minutes before using it again.

**3**



Thermometer case can be cleaned with a clean cloth with alcohol. Avoid gritty, abrasive cleaners as they can scratch the thermometer.



Do not hold the thermometer under the faucet or submerge in water. It is not water-proof.

### **Why am I getting a high reading?**

The TemporalScanner is measuring a core temperature. Like a rectal temperature, temperature taken with the TemporalScanner, on average, will be about a degree Fahrenheit higher than an oral temperature. With the exception of an infant up to about 6 months, the TemporalScanner, on average, will be about two degrees higher than an axillary (under the arm) temperature. Temperature on an infant up to about 6 months will be about the same as an axillary and rectal temperature as the infant's body temperature is close to being uniform regardless of where the temperature is taken.

### **Why am I getting low readings?**

Smudged or dirty lens: Clean the lens by following instructions on page 12.  
Pregression on forehead: Wait until the forehead has dried before taking a temperature. You can also try taking the temperature in the little soft depression on the neck just below the earlobe.

### **Why do I get a different reading with each scan?**

Multiple scans in rapid succession will change the temperature of the skin and result in variability of the readings. It is important to wait a full minute before repeating the scan to allow the skin over the temporal artery to recover from the cooler temperature of the probe head. The probe head is at room temperature and approximately say 30° F lower than body temperature.

### **Why do the readings differ from rectal temperature?**

Unlike rectal temperature, the TemporalScanner identifies a change in temperature immediately, since it is measuring the heat from the blood coming directly from the heart (a true core body temperature). Even on an infant when temperature is changing, it can take 60-90 minutes for rectal temperature to identify the change, and considerably longer on older children and adults.

For more information visit  
[www.exergen.com/consumer](http://www.exergen.com/consumer)

Scan this code  
for information  
on clinical studies



## Specifications

Clinical Accuracy	Meets ASTM E1965-98 and EN60601-1 standards for electronic and radiation thermometers to the extent applicable to thermometers which measure the surface of the skin over the temporal artery.
EMI/RFI Protection	Error message displayed
Calibration Protection	Error message displayed
Temperature Range	15.5 to 42°C (60 to 107.6°F)
Operating Environment	15.5 to 40°C (60 to 104°F). Resolution: 0.1°C or °F.
Response Time	Approximately 0.04 second
Time Displayed on Screen	30 seconds before automatic shutdown
Battery Life	Approximately 1000-5000 readings depending on 9V battery type
Size	7.0 in x 1.75 in x 1.25 in (17.8 cm x 4.45 cm x 3.18 cm)
Weight	4.5 oz (130 grams) including battery
Display Type	High contrast LCD
Construction Method	Impact resistant casing, hermetically sealed sensing system
Storage Range	-4°F to 122°F (-20°C to 50°C)
Laboratory Error	ASTM laboratory accuracy requirements in the display range of 37° to 39°C (98 to 102°F) for IR thermometers is +/-0.2°C (+/-0.4°F) whereas for mercury-in-glass and electronic thermometer, the requirement per ASTM standards E667-98 and E1112 is +/-0.1°C (+/-0.2°F). Full responsibility for this product meeting applicable portions of this standard is assumed by Exergen Corporation, Watertown, MA 02472. Patents: Listed at <a href="http://www.exergen.com/patents">www.exergen.com/patents</a> .

## Three Year Warranty

---

Exergen Corporation warrants each new Exergen TemporalScanner against defects in materials or workmanship for a period of 3 years, from the date of purchase, and agrees to repair or replace any defective product without charge.

**IMPORTANT:** This warranty does not cover damage resulting from accident, misuse or abuse, lack of reasonable care, the affixing of any attachment not provided with the product or loss of parts or subjecting the product to any but the specified battery.\* Use of unauthorized replacement parts will void this warranty. Exergen Corporation will not pay for warranty service performed by a non authorized repair service and will not reimburse the customer for damage resulting from warranty service performed by a non-authorized repair service.

No responsibility is assumed for any special, incidental or consequential damages. For warranty service, call Exergen Corporation Customer Service, 800-422-3006, visit [www.exergen.com/returns](http://www.exergen.com/returns) for a Return Material Authorization number (RMA). Then send the product postage or shipping prepaid, to Exergen in accordance with the instructions given with the RMA number.

**NOTE:** No other warranty, written or verbal, is authorized by Exergen Corporation. This warranty gives you specific legal rights and you may also have other rights which vary from state to state. Some states do not allow the exclusion or limitation of incidental or consequential damages, so the above exclusion and limitations may not apply to you.

**If you have any issue or concerns please contact Exergen Customer Service at 800-422-3006.**



Document p/n  
818582r1



Scan this code for more  
information on Exergen

© 2024 Exergen Corporation  
400 Pleasant Street  
Watertown, MA 02472, USA  
(617) 923-9900  
[www.exergen.com](http://www.exergen.com)